

# SIAB v2022 Install Instructions

Friday, September 16, 2022 12:03 PM

## Overview

The SIAB v2022 software can be installed side-by-side with the NFL GSIS Graphics System v5.8.2. This means you will run a new Executable (SIAB.exe) to launch the application. This executable will have a shortcut on the desktop, but for reference, the installation path is: <todo>

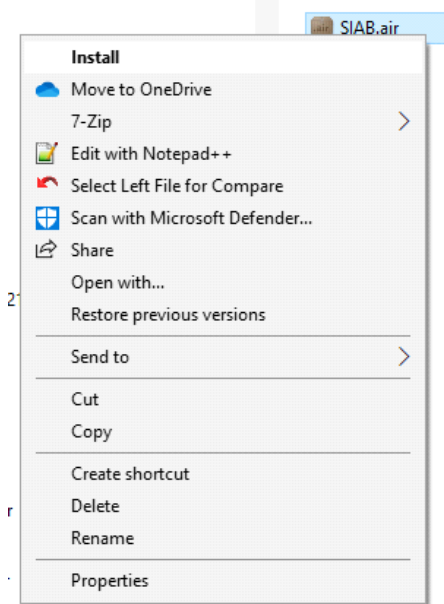
## Install Instructions

Download the SIAB installer from

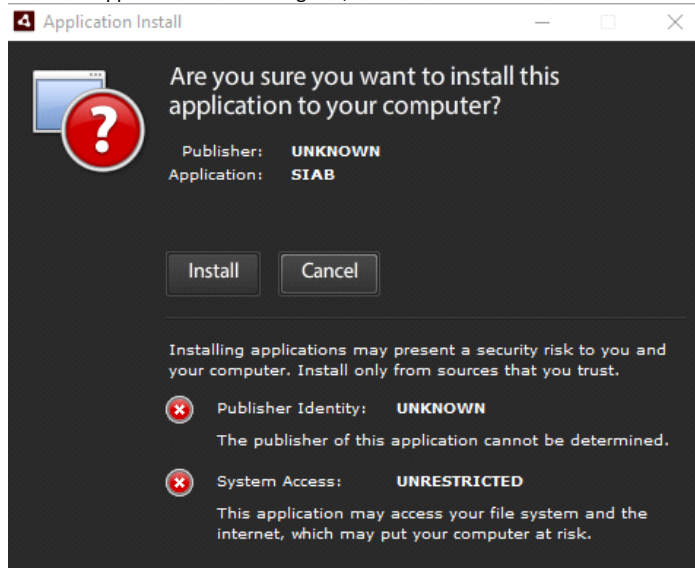
[https://www.nflgsis.com/StatsInABox/CurrentRelease/NFLGSISGraphicSystem\\_v2022.zip](https://www.nflgsis.com/StatsInABox/CurrentRelease/NFLGSISGraphicSystem_v2022.zip)

**UNZIP** the downloaded file

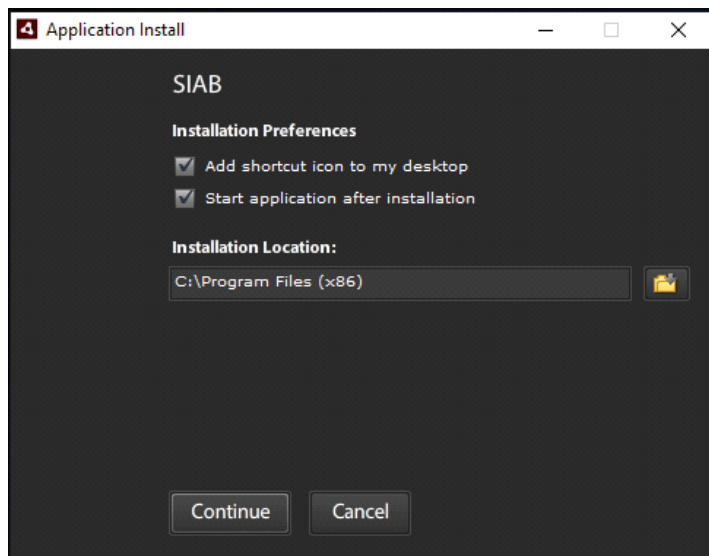
**Right-click** on the unzipped **SIAB.air** file and select **Install** from the shortcut menu



From the Application Install dialog box, select **Install**



Select the default values and click Continue:



The application will finish installing and **automatically launch**.

The **Locate XML Folder** location should be: C:\GSISData (same as before)

The **Locate Assets Folder** should be: C:\GSIS Graphics System\Assets (same as before)

Select the correct screen resolution and publish monitor screen.

Click **Next**

The top left corner of the application will look like the following:



Click on the **Settings** button near the top right of the application. If you had **custom** settings for Template Colors, Background Animations, Sponsor Logos or Application Config, you will need to reset those in this version of the software. You can open the **previous version** of the software (NFL GSIS Graphics System) in order to compare.

SETTINGS

BACK

LOCATE XML FOLDER

Please locate the folder where the GSIS XML data is stored on this machine.

C:\GSISData

CHOOSE ANOTHER FOLDER

LOCATE ASSETS FOLDER

Please locate the folder where all of the assets are located. This is normally c:\GSISGraphicSystem\Assets

C:\GSIS Graphics System\Assets

CHOOSE ANOTHER FOLDER

SWAP MONITORS

The publish screen will launch on:

MONITOR 2

If you change this setting, you must drag this application window to the other monitor.

TEMPLATE COLORS

APPLICATION CONFIG

VIEW

SELECT OUTPUT RESOLUTION

Please select the aspect ratio format.

4:1 (1920X1080)

16:9 (1920X1080)

4:3 (1920X1080)

BACKGROUND ANIMATIONS

View backgrounds per template

VIEW

SPONSOR LOGOS

View sponsor logos per stat

VIEW

PLAYER HIGHLIGHTING

Highlight Home Team

☒

CANCEL

SAVE

Click Cancel or Save to return to the main screen.

Click on Playlists near the bottom left of the application. Note: You will need to recreate any custom playlists. You can use the previous version of the application to review playlist settings.

On the desktop, you will see the following shortcut for the application:

A desktop shortcut icon for the SIAB application. The icon is a small square with a blue background, featuring a white document icon with a blue header and a small blue square in the bottom left corner. Below the icon, the text "SIAB" is displayed in white.

Note: this application uses the same Assets location as the previous version. If you've already updated Headshots, Logos and Backgrounds for the 2022 season, you should be in good shape there. Otherwise, please download the 2022 assets from <https://www.nflgsis.com/StatsInABox>

StatsInABox Page 3